



**MAY 2024**  
**END OF YEAR E-NEWSLETTER**  
**WWW.GCSD.K12.WI.US**



*Class of 2024*

**15 MAY 2024**  
*Wednesday*

**LAST DAY OF MORNING CLASSES**

- 4th Hour: Dismissed for Senior Potluck
- 2:50PM: Walk of Honor
- 3:10PM: Final Check out

**SENIOR SCHOLARSHIP/AWARDS BANQUET**

- 5:30PM: Light Appetizers
- 6:00PM: Scholarship Ceremony

**17 MAY 2024**  
*Friday*

**PRACTICE**

- 9:00AM: Class of 2024 report to the gym
- Practice is mandatory for participation in ceremony
- Afterwards a "noisy" celebratory lap through the high school

**18 MAY 2024**  
*Saturday*

**GRADUATION**

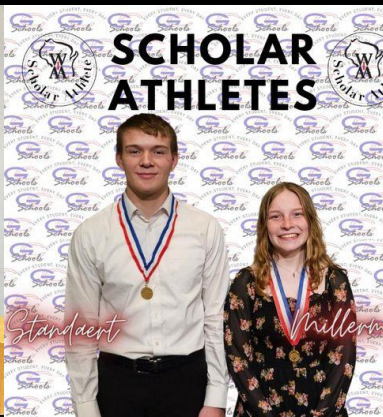
- 10:00AM: Graduates Arrive
- 11:00AM: Graduation Ceremony
- Doors do not open to the public until 10:15AM
- Chair seating is reserved, each graduate gets **six seats**
- Overflow will be in the bleachers



*Class of 2024*  
**GRADUATION**

**18 MAY 2024**  
 11:00 AM

**GLENWOOD CITY HIGH SCHOOL GYM**  
 850 Maple Street, Glenwood City, WI



Above the GCSD Board of Education recognized the GCHS Class of 2024 Co-Valedictorians and Salutatorian! Congratulations to Co-Valedictorians, Sydney Grant and Savanna Millermon, and Salutatorian, Will Standaert. The Board of Education also recognized two scholarship awards for the Class of 2024. Sydney Grant was recognized as the recipient of the Academic Excellence Scholarship (AES), which is awarded to high school seniors in Wisconsin with the highest GPA in any public or private high school in the entire State of Wisconsin. Eli Nerby was recognized as a recipient of the Technical Excellence Scholarship (TES) Scholarship, which is awarded to High School Graduates in Wisconsin who have demonstrated the highest proficiency level in technical education.





# Welcome

## TO THE TEAM AND HILLTOPPER FAMILY

ON MONDAY, APRIL 22, 2024 THE GCSD BOARD OF EDUCATION APPROVED MS. JAMIE SHAFFER AS THE NEXT GLENWOOD CITY ELEMENTARY PRINCIPAL STARTING JULY 1, 2024. MS. SHAFFER HAS BEEN THE DIRECTOR OF LEARNING AT CUMBERLAND SCHOOL DISTRICT FOR THE PAST 9 YEARS. MS. SHAFFER HOLDS A BACHELOR OF SCIENCE DEGREE FROM UW-SUPERIOR, A MASTER OF SCIENCE DEGREE IN EDUCATION FROM CONCORDIA UNIVERSITY, AND PRINCIPAL CERTIFICATION FROM ST. MARY'S UNIVERSITY. AS A FORMER KINDERGARTEN, 1ST, 2ND, AND 4TH GRADE ELEMENTARY CLASSROOM TEACHER FOR 11 YEARS, WE LOOK FORWARD TO MS. SHAFFER LEADING OUR STUDENTS AND STAFF OF GLENWOOD CITY ELEMENTARY SCHOOL.

WHEN YOU SEE MS. SHAFFER PLEASE  
GIVE HER A VERY WARM HILLTOPPER WELCOME!

WE ARE VERY EXCITED FOR MS. SHAFFER TO JOIN OUR TEAM!

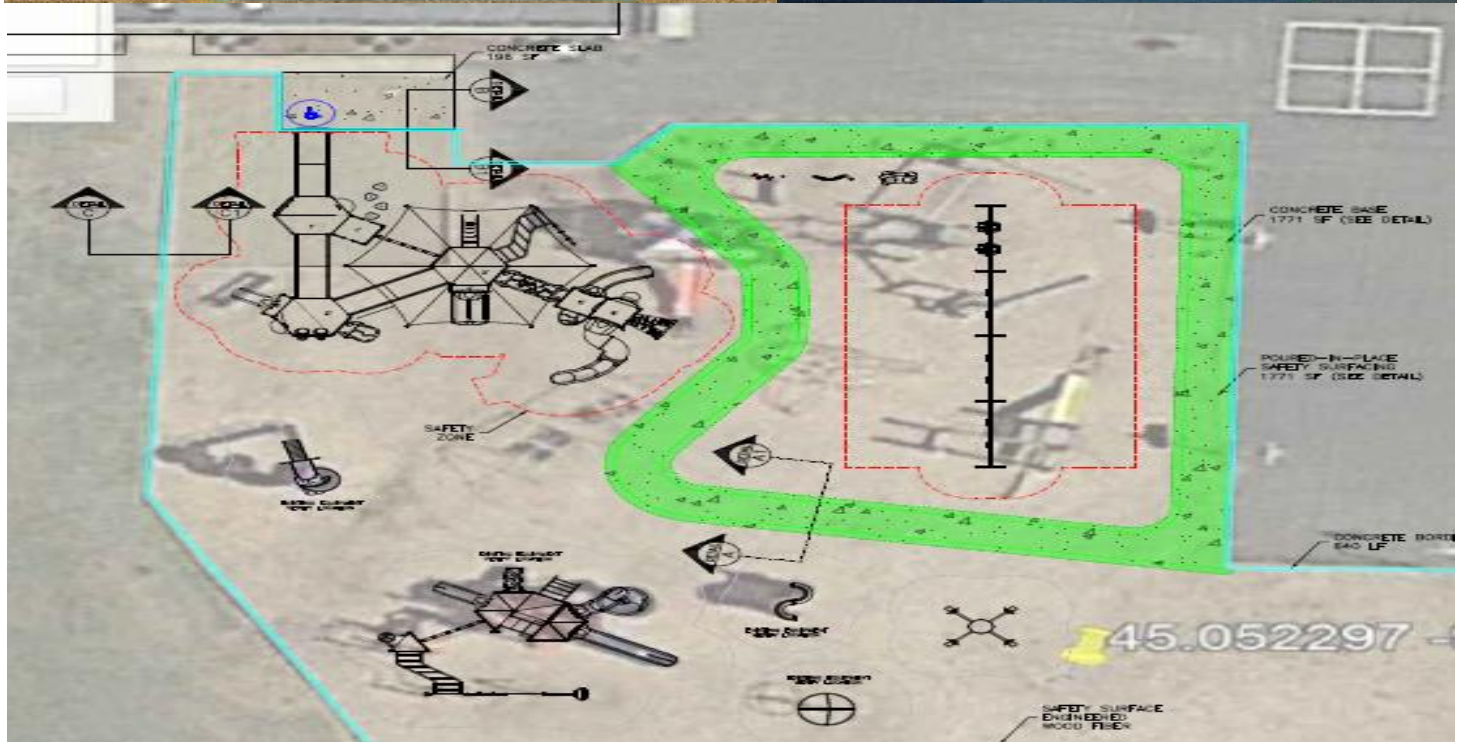


I'M EXCITED TO GET TO KNOW EACH OF YOU AND WORK TOGETHER TO MAKE A POSITIVE IMPACT HERE AT GLENWOOD CITY SCHOOL DISTRICT! I AM A STRONG BELIEVER IN BUILDING POSITIVE RELATIONSHIPS AND OPEN-AND-HONEST COMMUNICATION. OUTSIDE OF WORK, I ENJOY SPENDING TIME RIDING HORSES AND BEING WITH MY FAMILY. MY HUSBAND AND I LIVE JUST OUTSIDE OF CUMBERLAND, WITH OUR TWO KIDS, ADDISON (14), AND KEENAN (12). THEY KEEP US BUSY WITH A VARIETY OF SPORTS AND ACTIVITIES - MS. JAMIE SHAFFER

**Intellex Forensics:** The School District of Glenwood City has a fundamental responsibility to be effective stewards of the taxpayers' money. To provide complete transparency, the GCSD Board of Education approved a contract with [Intellex Forensics Advisory Services, Inc.](#) at the March 13, 2024 Board Work Session to conduct a forensic audit. The fee for conducting the forensic review of School District Glenwood City is capped at \$21,000. Final findings will be presented at a GCSD Board of Education Work Session in open session once the process is completed. Anticipated completion is May 2024.

**GCE Playground:** On 2-26-24 the GCSD Board of Education approved moving forward with the Community Education construction project for this coming summer which includes our weight room and our wrap around program. In working with DPI, certain items are not allowed to be completed using Fund 80 monies. We will be actively pursuing spending funds from Fund 80 to update the GCE Playground. This is a space our students use daily, during summer school, during weekends and much more. It also fits into the parameters of Fund 80 and the restrictions these monies need to follow. Installation of this new playground will be taking place August 1, 2024.

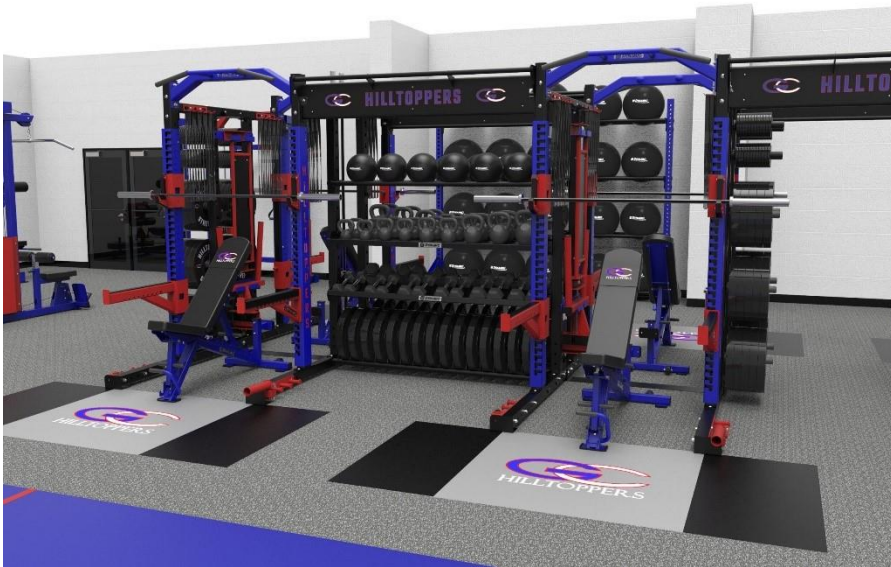
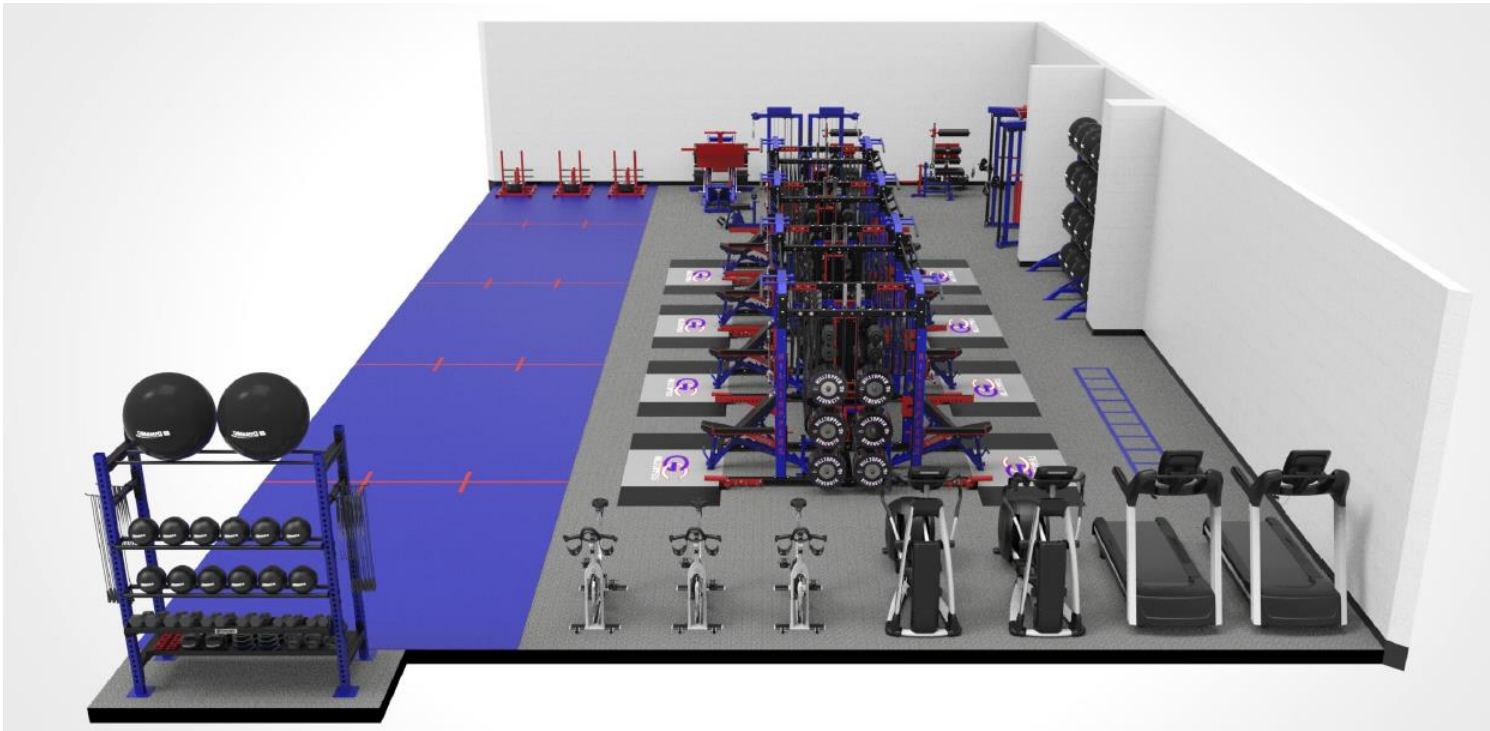




First, we would like to thank Jordan Logghe and Logghe Trucking for donating the new wood chips to compliment our new playground. In addition, we are also replacing the outdoor basketball hoops to create a better playing environment. Finally, the green walking path around the playground will allow for more inclusive participation along with a means for students to take a nice active stroll while also in this area.







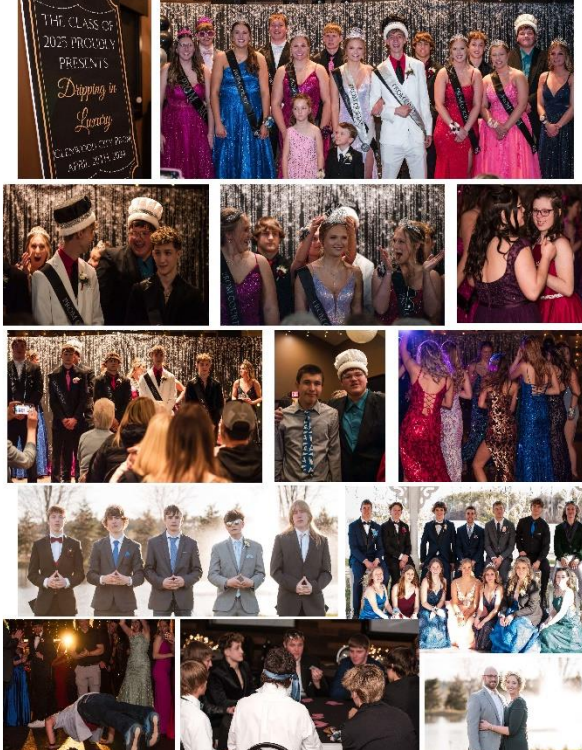
COMING FALL  
2024







**Prom Was a Success** 150 students gathered at the Phoenix event center to dance the night away.









SHERRY CROSBY IS

*Retiring*



After **23** Years



THANK YOU TO MS. CROSBY FOR HER 23 YEARS OF HARD WORK AND DEDICATION TO THE GLENWOOD CITY SCHOOL DISTRICT. SHERRY WAS HIRED IN THE SPRING OF 2002 AND IN 2005 TOOK OVER AS FOOD SERVICE MANAGER.

**WE WISH SHERRY NOTHING BUT THE BEST IN HER RETIREMENT!**

CINDY CUTURIA IS

*Retiring*



After **28** Years



THANK YOU TO MS. CUTURIA FOR HER 28 YEARS OF HARD WORK AND DEDICATION TO THE GLENWOOD CITY SCHOOL DISTRICT. CINDY WAS HIRED IN THE FALL OF 1996.

**WE WISH CINDY NOTHING BUT THE BEST IN HER RETIREMENT!**

TAMMY ERICKSON IS

*Retiring*



After **27** Years



TAMMY ERICKSON HAS BEEN WITH THE GLENWOOD CITY SCHOOL DISTRICT FOR 27 YEARS. SHE JOINED OUR STAFF IN 1997. SHE HAS SERVED THE DISTRICT IN MANY DIFFERENT AREAS AS A PARAPROFESSIONAL. THE PAST HANDFUL OF YEARS SHE HAS SPENT IN OUR ARC CLASSROOM. SHE WILL BE MISSED!

**MS. ERICKSON, WE WISH YOU ALL THE BEST IN YOUR RETIREMENT!**

BETSY HALTINNER IS

*Retiring*



After **23** Years



BETSY HALTINNER HAS BEEN WITH THE GLENWOOD CITY SCHOOL DISTRICT FOR 23 YEARS. SHE JOINED OUR STAFF IN 2001 AFTER BEING A SCHOOL COUNSELOR AT CHIPPEWA FALLS HIGH SCHOOL. BEFORE SHE WAS APPOINTED GCE'S PRINCIPAL IN 2013, BETSY SERVED AS GCSD'S CHARTER SCHOOL INSTRUCTOR, INSTRUCTIONAL COACH, ALTERNATIVE EDUCATION COORDINATOR, AND ELEMENTARY SCHOOL COUNSELOR.

**WE WISH MS. HALTINNER ALL THE BEST IN HER RETIREMENT!**





**SCHOOL DISTRICT OF GLENWOOD CITY  
STAFF APPRECIATION WEEK (MAY 6-10)**

*Monday - SURPRISE from your building principal!*

*Tuesday - Taco Bar Lunch - Sponsored by GCE PTC (@ GCE Workroom, GCMS/HS Workroom, and Bus Garage)*

*Wednesday - Arrive a half hour late (8:00am) and enjoy a veggie platter and a meat & cheese platter throughout the day (@ GCE Workroom, GCMS/HS Workroom, and Bus Garage)*

*Thursday - Enjoy baked goods from Ka'u'u (@ GCE Workroom, GCMS/HS Workroom, and Bus Garage) and show your badge for a cup of coffee from River Road Coffee Truck parked at the GCHS main entrance from 6:30am-8:30am. Sponsored by PTC and GCE Student Council.*

*Friday - Pizza Lunch with Brick Fire Pizza - Sponsored by Miller's Sandblasting & Painting, LLC.*



**GCSD Budget Summary – October 23, 2023 and February 26, 2024:** Recently questions have arisen about property tax statements, particularly the rise in school taxes. Let's clarify why this has happened. In 1993, our state government instituted revenue limits, putting our district on a fixed income. Back then, the School District of Glenwood City spent less per pupil than most, establishing a baseline for annual increases. Both state aid and property taxes have been constrained since 1993. The more state aid a district receives, the less they rely on local property taxes. But remember, both revenue sources have been capped since 1993. Within the 2023-25 biennium budget, a law allowed districts receiving less than \$11,000 per pupil to increase that amount to \$11,000. Since we were at \$10,000, our revenue generation per pupil increased by \$1,000, contributing to the observed increase. The School District of Glenwood City still spends significantly below the state average. For many, rising property values play a role. The school district has no control over this; if your property's value is higher this year, you'll pay more in taxes. School choice vouchers also impact taxes in. Families can choose private schools, with a portion funded by taxpayers. Some of you have asked where the increase you are paying is going. Part of it stems from the 2021-23 biennium budget, where there was no increase to the state aid formula. COVID-related ESSER funds from the federal government were intended for one-time costs, but the state didn't increase aid, leading districts to use some funds for ongoing costs. The increase in local tax revenue fills the gap that ESSER funds will leave. Our annual budget is \$8.5 million, necessary for programs and services preparing our children for the future.



**Q: Why did my property taxes go up this year?**

*A: Each person who owns property is subject to tax by multiple entities. These entities include, but not limited to: County, School District, Township or City, Technical College, and the State of Wisconsin. Since your overall tax bill is composed of several entities, all will play a role in the amount of tax you owe. The levy from each of these entities, as well as the overall property value an owner has, will determine your overall tax bill.*

**Q: Why did the Glenwood City School District's portion of my property tax bill increase?**

*A: On October 23, 2023 the GCSD Board of Education approved the Recommended 2023-24 GCSD Budget. Click [HERE](#) to view this approved budget. This included taking advantage of the revenue cap limit increase ability and the opportunity to address facility needs.*

**Q: What is the mill rate and how does it affect property taxes?**

*A: The mill rate is the amount of tax a property owner will pay per \$1,000 of property value. Each school district in Wisconsin has the authority to levy up to a specific dollar amount for public schools. This amount is different for every district and is set by the State of Wisconsin in what is known as the "Revenue Limit." The mill rate is calculated by taking the Revenue Limit and then dividing this by the Total Equalized Value for all properties within the school district. This answer is then multiplied by 1,000, to get a mill rate, or rate of tax per \$1,000 of property value.*

*Example: In 2023, the Glenwood City School District had a total levy in the amount of \$3,511,796. The total equalized value for the District was \$432,283,038.  $\$3,511,796 \div \$432,283,038 \times 1000 = \$8.16$ .*

**Q: How can I calculate to see if my tax bill reflects this \$8.16 mill rate?**

*A: Remember the \$8.16 mill rate is an average rate for all municipalities within the school district. Therefore, some individual property owners may have slightly higher or lower rates. However, some simple math should get you close. Take the Fair Market Value shown on your property tax and divide it by 1,000. Multiply this answer by \$8.16, which is the mill rate. This is the expected tax to pay towards the school district's portion.*

*Subtract the School Tax Credit, since this is a credit from the State of Wisconsin. The answer should be close to the amount listed under your 2023 Glenwood City School District Tax.*

*Example: Property value of \$175,000.  $\$175,000 \div 1000 = 175$ . Multiple  $175 \times \$8.16 = \$1,428$ . Subtract school tax credit and compare to amount shown for 2023 Glenwood City School District tax.*

**Q: Why did the Glenwood City School District levy \$700,000 in Fund 80?**

*A: The GCSD Current Fund Balance (Fund 80) = \$1,979,739. This coupled with the following facts:*

- Fund 80 fund balance and revenue can only be used for community educational needs*
- We have numerous facility items to address due to lack of maintenance over the last decade*
- We are seeing a growing need for child care in our community*
- We are not using our existing facility in an efficient manner per Wold Architects and Engineers*
- With basic clean up and facility rearrangements, we are able to full fill future needs*
- We lack community education space and outreach areas*
- We have a non-compliant and outdated weight room that provides limited use due to current location*



**Q: What is Fund 10**

*A: The general fund is used to account for all financial transactions relating to the district's current operations, except for those required to be accounted for in other funds. Instructional Funds (Funds 10, 21, 23, 27, 29, 91, 93 and 99) Instructional funds are funds where elementary and secondary instruction (i.e. K - 12) activities (100 000 function series), pupil support activities (210 000 function series) or instructional staff support (220 000 function series) are recorded.*

**Q: What is Fund 46**

*A: A school board with an approved long-term capital improvement plan (minimum of 10 years) may establish a "trust" that is funded with a transfer from the general fund. The contribution from Fund 10 to Fund 46 (Long-term Capital Improvement Trust Fund) is recorded as the expenditure for shared cost and equalization aid purposes. Future expenditures from Fund 46 are not part of shared costs. A school board is prohibited from removing money deposited into Fund 46 for a period of five years after the fund is created. After the initial five year wait period is over, funds may only be used for the purposes identified in the approved long-term capital improvement plan. Fund 46 assets may not be transferred to any other school district fund.*

**Q: What is Fund 80**

*A: The Community Program and Services (CPS) Fund 80 is used to account for activities such as adult education, community recreation programs (such as evening swimming pool operation and softball leagues), elderly food service programs, non-special education preschool, day care services and other programs which are not elementary and secondary educational programs but have the primary function of serving the community. Expenditures for these activities, including cost allocations for salaries, benefits, travel, purchased services, etc., are to be included in this fund to the extent feasible.*

**Q: School District of Glenwood City Fund Balances**

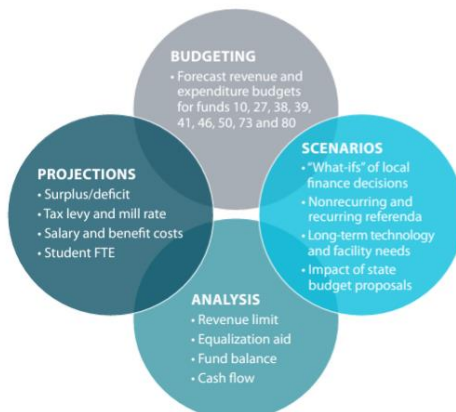
*A: Fund 80 - \$2,700,000*

*Fund 46 - \$860,000 plus current budget is to move \$150,000 = \$1,010,000*

*Fund 10 - \$1,900,000 or 20% (Board Policy is 662.3) - The District will strive to maintain a fund balance in the operating fund equal to a minimum of 15% of the operating budget. At most, the district will maintain a maximum fund balance in the operating fund equal to 25% of the operating budget.*

**Q: GCSO and Baird Forecast Model for better financial planning**

*A: Wisconsin schools face unique fiscal challenges – and you deserve a partner with the experience and understanding to address them. Our Baird Budget Forecast Model provides valuable insight, scenarios and projections to utilize for analysis and communication, both internally and within your community. The Baird Budget Forecast Model provides tools for your district's short- and long-term financial planning:*





School District of Glenwood City Mill-Rate History							
Year	2011-12	2012-13	2013-14	2014-15	2015-16	2016-17	2017-18
Mill-Rate	8.44	9.40	9.86	10.02	9.52	10.04	9.81
Year	2018-19	2019-20	2020-21	2021-22	2022-23	2023-24	2024-25
Mill-Rate	9.76	9.47	9.49	8.01	6.91	8.16	TBD



The School District of Glenwood City’s Team of staff members continue to build toward a viable strategic planning process of using available knowledge to create one forward-focused vision. Since July of 2023, we have been learning and documenting our entities intended direction. We continue to prioritize efforts, effectively allocate resources, align shareholders and team members on the District’s goals and ensure our process is backed by data and sound reasoning. The School District of Glenwood City’s strategic plan will be built on the foundation of our core purpose: Every Student, Every Day. This is further supported by our Core Values of excellence, respect, integrity, learning, passion, diversity, and collaboration. The development and implementation of this plan will ensure that the School District of Glenwood City can offer college and career readiness skills that will further our students’ academic development and social conscience. The School District of Glenwood City’s strategic plan process will be a constant work in progress. Many items are being addressed and worked on behind the scenes to create a solid foundation. As a student, as a staff member, as a parent, as a community member, your time will come to give input, make suggestions, and assist in this process.

Respectfully,

Patrick B. Olson  
District Administrator







## **Hold the Rope!**



Every year, teams win championships, businesses win awards, and the best school districts are rated high on the state accountability system. All these organizations have one thing in common. No matter how tough it becomes throughout the year, they did one thing – **THEY HELD THE ROPE!** What is "holding the rope?" Imagine that you are hanging from the edge of a cliff with a drop of twenty thousand feet. The only thing between you and a fall to your death is a rope, with the person of your choice on the other end. Who do you know that has the guts to pull you to safety? Who will hold the rope? Who do you know that is going to let that rope burn their hand and not let go? How many people that you know are going to withstand the burning pain and watch the blood drip from their hands for you? If you can name two people, that's not good enough, because those two people might not be around. The next time your team is together, look around and ask yourself, "Who could I **TRUST** to hold the rope? Who is going to let their hands bleed for me?" When you can look at every member on your team and say to yourself that they all would hold the rope, **WE** are destined for success. You see the team that holds the rope when the going gets tough **ARE DESTINED FOR GREATNESS.** When times are tough don't give up. Yell at your teammates to "hold the rope -- let it burn but don't let go!" No matter what area of our school you work in, we need your commitment to our team – **AS YOU MAKE A DIFFERENCE!**

**Don't let your TEAM down! You've got to hold the rope!**







To: GCSD Board of Education and GCSD Staff  
 From: Patrick Olson – District Administrator  
 Date: April 22, 2024  
 Subject: 2024-2025 GCSD Calendar Recommendation

The following recommendation is a result of numerous discussions, listening sessions, survey results, comparisons with area Districts, and research of best practices for a District calendar. The main focus of this calendar change is to provide quality time for GCSD staff to both receive and also take part in quality professional learning in areas such as PLC opportunities, Curriculum development, Safety training, Technology training, and much more. Various changes from the GCSD 2023-24 Calendar to the GCSD 2024-25 calendar recommendation include the following:

- Staff contract days stay the same at 187
- Staff report at the same time as in the past
- Staff dismissal is at the same time as in the past
- Student start time has shifted from 8:20am to 8:00am
- Student end time has shifted from 3:30pm to 3:20pm
- Student instructional days have shifted from 172 to 168
- We will have only one early release which will be the last day
- We will have 11 Professional Learning Days for Staff. These days will be on Monday's so families can have 3-day weekends to assist with student absenteeism

#### **GCSD 2024-25**

7:30 Staff Report  
 8:00 Start of School  
 Dismissal  
 3:45 Staff Dismissal  
 435 min instruction per day  
 60 min prep each day  
 7 hours 15 min instructional  
 PLD = 11 days  
 PLD = 82 hours  
 Staff Hours per day-7.45 hours  
 Student Days-168  
 Staff Days-187  
 Early Release-1  
 Summer School-4 days  
 Flex-3 days  
 Conferences -8 hours  
 Total student hours-1145 hours  
 Extra student hours-8  
 Snow Days Built-1

2024-25 Proposed				2023-24 Current			
Month	Staff	Student		Month	Staff	Student	
a	7	4	Summer School	a	6	3	Summer School
s	20	19		s	20	20	
o	23	22		o	21	21	
n	18	16		n	19	17	
d	15	15		d	16	16	
j	22	21		j	22	21	
f	20	19		f	19	19	
m	16	16		m	16	15	
a	21	20		a	22	22	
m	21	20		m	22	21	
Total	183	168		Total	183	172	
Flex	3			Flex	3		
E-Camp							
Paid-Cur							
PTC	.5 and .5			PTC	.5 and .5		
Total	187	435	Min per day	Total	187	430	Min per day

#### **GCSD 2023-24**

7:30 Staff Report  
 8:20 Start of School  
 3:20 Student Dismissal  
 3:30 Student Dismissal  
 3:45 Staff Dismissal  
 430 min instruction per day  
 65 min prep each day  
 7 hours 10 min instruction  
 PLD = 8.5 days  
 PLD = 63 hours  
 Staff Hours per day-7.45 hours  
 Student Days-172  
 Staff Days-187  
 Early Release-3  
 Summer School -3 days  
 Flex-3 days  
 Conferences-8 hours  
 Total student hours-1135 hours  
 Extra student hours-0  
 Snow Days Built-0



### **Regular School Day 2024-25**

8:00am to 3:20pm

7 hours 20 minutes

440 minutes per day

### **Early Release**

12:00pm to 3:20pm

3 hours and 20 minutes

Out 200 minutes early

### **GCSD Day Summary**

Staff - 187

Student -168

PLD-11

Conference 2 until 8pm

Flex-3

Summer-4

GCSD-Student Hours 1145 hours

DPI Required Hours 1137 HS only

Difference 8 hours

Extra-per DPI 480 min

Extra Built In 1 snow days

Extra -Snow 480 min

Early Release 1 day and 200 min on last day

PLD Days 11 days

Conference 1 hours

GCSD-Staff 187 days

GCSD-Student 168 days

### **GCSD Monthly PLD Template**

7:30-8:30am District PLC Meeting

8:45-9:45am Grade/Department PLC Meetings

10:00-12:00(Noon) Building PLC Meetings Led by Building Administration

12:00-1:00pm Lunch

1:00-3:45pm Staff Prep

### **GCE August Draft Summary for Discussion**

- 20 Professional Learning Day - No School for Students
- 21 Professional Learning Day - No School for Students
- 22 Professional Learning Day - No School for Students
- 23 No School for Staff or Students
- 26 4K, K - 5 Orientation/Assessment Appointments
- 27 4K, K - 5 Orientation/Assessment Appointments
- 28 4K and Kindergarten Orientation/Assessment, Grades 1 - 5 Orientation/Assessment
- 29 4K Orientation/Assessment, Kindergarten - 5 Report

### **GCE September Draft Summary**

- 2 Labor Day - No School Staff or Students
- 3 All 4K - 12 Students Report





# 2024-2025 School Calendar

## August 2024

Su	M	Tu	W	Th	F	Sa	
				1	2	3	13 GCSD ED Camp
4	5	6	7	8	9	10	14 New Staff Inservice
11	12	13	14	15	16	17	20-22 GCSD Staff PLD
18	19	20	21	22	23	24	26-29 GCSD Orientation Days
25	26	27	28	29	30		30 No School

## January 2025

Su	M	Tu	W	Th	F	Sa	
			1	2	3	4	1 No School
5	6	7	8	9	10	11	20 GCSD Staff PLD
12	13	14	15	16	17	18	
19	20	21	22	23	24	25	
26	27	28	29	30	31		

## September 2024

Su	M	Tu	W	Th	F	Sa	
1	2	3	4	5	6	7	2 No School
8	9	10	11	12	13	14	16 GCSD Staff PLD
15	16	17	18	19	20	21	
22	23	24	25	26	27	28	
29	30						

T-20 / S-20

## February 2025

Su	M	Tu	W	Th	F	Sa	
						1	13 Early Release Elem ONLY
2	3	4	5	6	7	8	13 Parent/Teacher Conferences 4-8pm
9	10	11	12	13	14	15	17 GCSD Staff PLD
16	17	18	19	20	21	22	
23	24	25	26	27	28		

T-19 / S-19

## October 2024

Su	M	Tu	W	Th	F	Sa	
		1	2	3	4	5	17 Early Release Elem ONLY
6	7	8	9	10	11	12	17 Parent/Teacher Conferences 4-8pm
13	14	15	16	17	18	19	21 GCSD Staff PLD
20	21	22	23	24	25	26	
27	28	29	30	31			

## March 2025

Su	M	Tu	W	Th	F	Sa	
						1	
2	3	4	5	6	7	8	11 ACT - MS/HS Virtual Day
9	10	11	12	13	14	15	17-21 No School
16	17	18	19	20	21	22	
23	24	25	26	27	28	29	
30	31						

## November 2024

Su	M	Tu	W	Th	F	Sa	
					1	2	25 No School - GCSD Staff PLD
3	4	5	6	7	8	9	26 No School - GCSD Staff PLD
10	11	12	13	14	15	16	27 No School
17	18	19	20	21	22	23	28 No School
24	25	26	27	28	29	30	29 No School

## April 2025

Su	M	Tu	W	Th	F	Sa	
		1	2	3	4	5	18 No School
6	7	8	9	10	11	12	21 No School - GCSD Staff PLD
13	14	15	16	17	18	19	
20	21	22	23	24	25	26	
27	28	29	30				

## December 2024

Su	M	Tu	W	Th	F	Sa	
1	2	3	4	5	6	7	23-27 No School
8	9	10	11	12	13	14	30-31 No School
15	16	17	18	19	20	21	
22	23	24	25	26	27	28	
29	30	31					

## May 2025

Su	M	Tu	W	Th	F	Sa	
				1	2	3	16 Graduation
4	5	6	7	8	9	10	26 No School
11	12	13	14	15	16	17	29 Last Day - Early Release
18	19	20	21	22	23	24	29 Staff Appreciation Assembly
25	26	27	28	29	30	31	30 GCSD Staff PLD





**Wold Architects and  
Engineers**

332 Minnesota Street  
Suite W2000  
Saint Paul, MN 55101  
651 227 7773

**PLANNERS  
ARCHITECTS  
ENGINEERS**



---

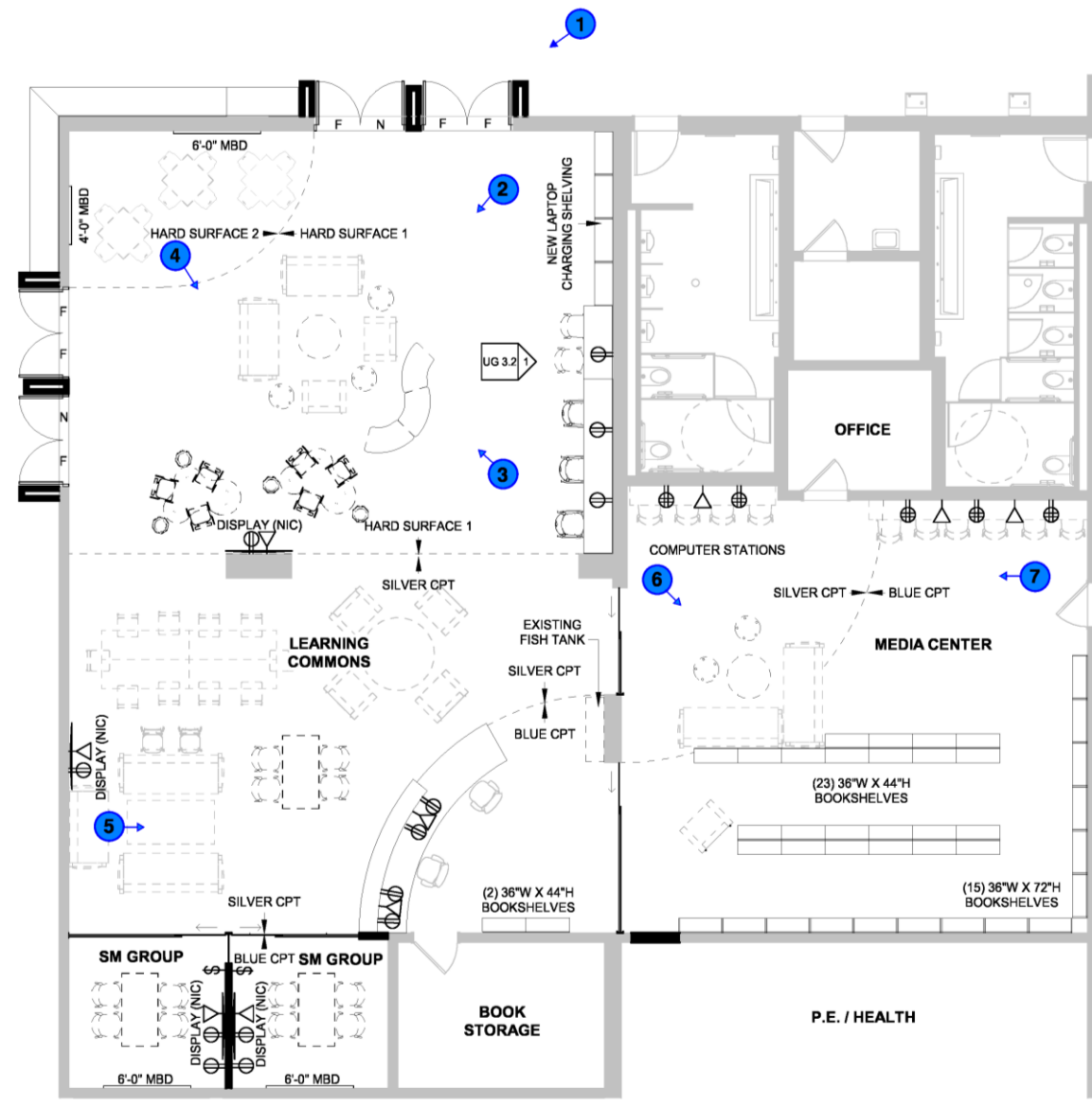
## **Glenwood City School District**

Learning Commons & Media Center  
Materials and Renderings  
April 23, 2024





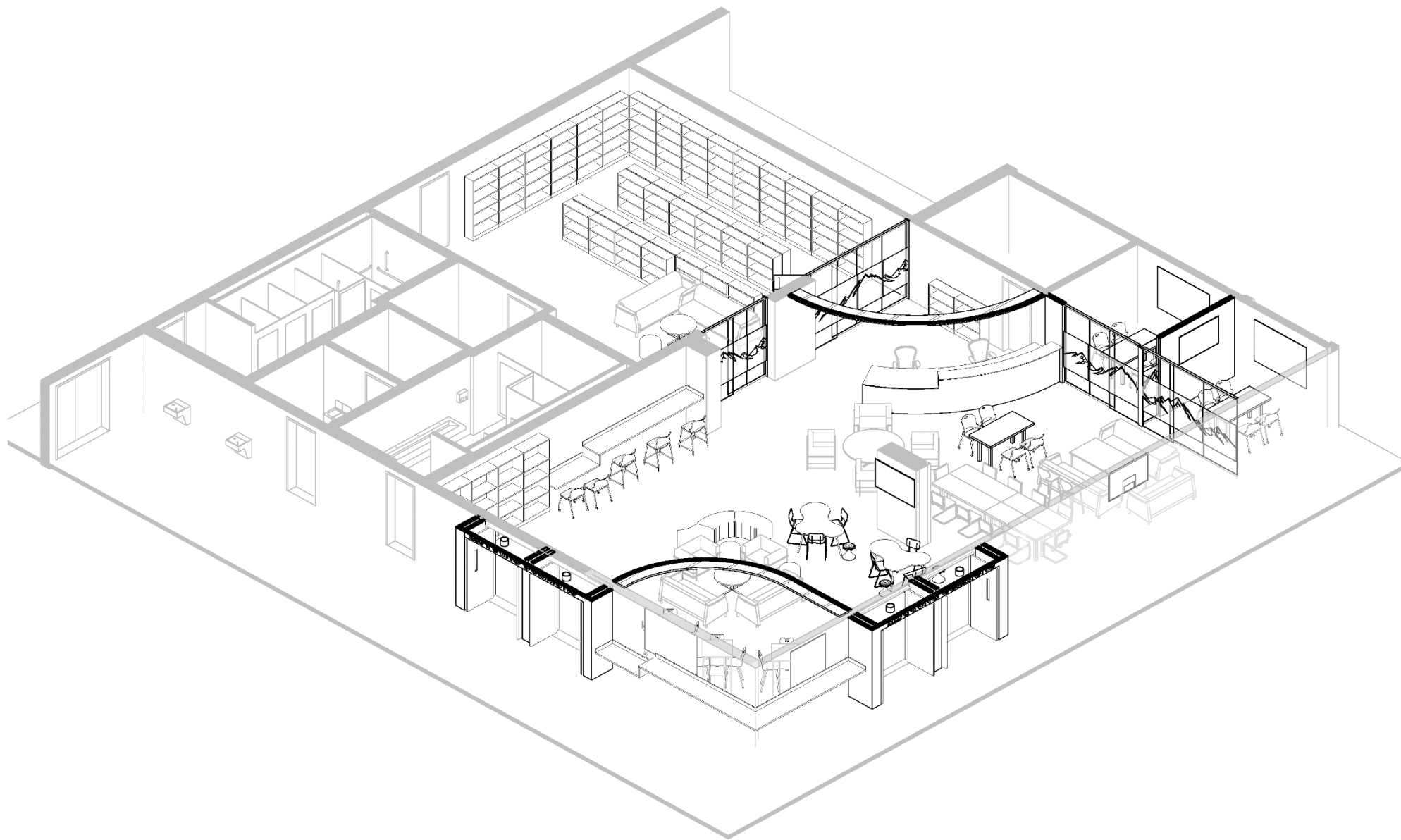
# Learning Commons & Media Center Diagram



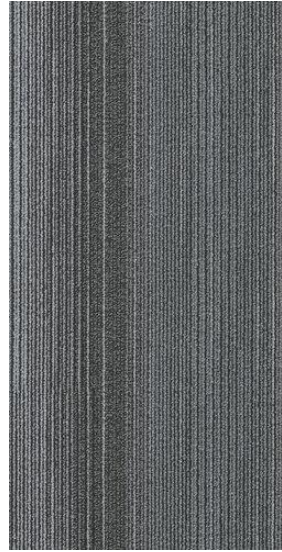




# Learning Commons & Media Center Axon







Carpet



Marmoleum



PLAM –  
Bookshelves & Desk



Countertops



Wood Doors

# Interior Materials



Paint



# Learning Commons - Entry

VIEW 1







# Learning Commons

VIEW 2





# Interior – Classroom Pod

VIEW 3







# Interior – Main Entry

VIEW 4





# Interior – Main Entry

VIEW 5







# Interior – Classroom Pod

VIEW 6





# Interior – Classroom Pod

VIEW 7







## Public Health

Services Center

1752 Dorset Ln | New Richmond WI 54017  
Telephone: 715-246-8263 | Fax: 715-246-8367  
[www.sccwi.gov](http://www.sccwi.gov)

04/16/2024

Dear Parent/Guardian,

The CDC has reported measles cases currently occurring in 18 states, three being neighbors of Wisconsin. The Glenwood City School District, in partnership with St. Croix County Public Health would like to take this opportunity to provide some information about measles and how to prevent it.

Measles is a viral infection that causes fever, cough, a rash, sore eyes, and can lead to serious complications. Measles spreads very easily, so it is important to protect against infection. Getting vaccinated is the best way to prevent measles.

Two doses of Measles, Mumps, Rubella (MMR) vaccine provide the best protection against disease. These doses must be separate by at least 28 days. MMR vaccine is routinely recommended between 12-15 months and the second dose before entering school, at 4-6 years. Waivers to the school requirements are available for religious, health, and personal conviction reasons. **However, in the event of an exposure or outbreak of measles; exposed students with waivers or without proof of immunity will be excluded from school until the outbreak is declared over. If your child is fully vaccinated or has proof of immunity, they will not be excluded from school.**

**It is important for you to check your child's immunization records to make sure he/she has received two doses of MMR vaccine.** You may check your child's immunization record by logging on to the Wisconsin Immunization Registry (WIR) [at https://www.dhs.wisconsin.gov/immunization/wir.htm](https://www.dhs.wisconsin.gov/immunization/wir.htm). St. Croix County Public Health and/or family health care provider may also have your child's immunization record.

If your child needs the MMR vaccine, please call your health care provider. St. Croix County Public Health offers free vaccines to children who have Badgercare or children with no health insurance. Contact St. Croix County Public Health at 715-246-8263 to schedule an appointment.

If your child does develop a rash with a fever, they should not attend school and you should call your health care provider. It is important to call the clinic or hospital before taking your child in. Please remember – the best way to protect your child is to ensure they have had two doses of the MMR immunization. For more information on measles, please visit <https://www.cdc.gov/measles/>.

Sincerely,

St. Croix County Public Health Department





## St. Croix County Community Food Resource Directory Spring 2024



**211**

Wisconsin

connects you to critical health and human services in your community 24 hours a day, 7 days a week, 365 days a year at no cost to you.

### Receive 211 support by



**Calling** 211 or (877) 947-2211



**Texting** your zip code to 898211



**Visiting** [211wisconsin.communityos.org](http://211wisconsin.communityos.org)

### Commodity Supplemental Food Program

For low-income qualifying seniors over 60. Call **West Central WI Community Action Agency** at 715-977-1167 to learn more.



Qualified seniors aged 60+ have access to free or donation-based food resources including:

- \* **Farmers Market Nutrition Program** to purchase produce at certified vendors from June to October.
- \* **Nutrition Program** offers hot, nutritious meals at nine locations throughout the county.
- \* **Meal delivery** if unable to visit dining sites, cook for themselves or have someone else prepare meals for them.

**ADRC of St. Croix County: 715-381-4360**



- \* Wholesome foods for pregnant women, new moms, infants & children under 5
- \* Breastfeeding support
- \* Nutrition & feeding tips for families
- \* Farmers Market Program vouchers for produce at certified vendors from June to October.

**St. Croix County WIC: 715-246-8359**  
[wicmomstrong.com](http://wicmomstrong.com)



For emergency food needs, call **715-246-1222**. An operator can connect you to volunteers in the area.

### Hudson Area Backpack & Food Program

Visit [hudsonbackpack.com/family-signup](http://hudsonbackpack.com/family-signup) to learn more about grocery distribution, Fresh Harvest Market and backpack programs.

### Free or Reduced School Meals

Free or reduced price school breakfast and lunch that meet nutrition requirements set by the federal government are available to families with limited income, families receiving WIC, and children in households receiving FoodShare benefits.

**Contact your school's office for information.**

**Learn about additional statewide food, nutrition & health programs at**  
[www.access.wisconsin.gov](http://www.access.wisconsin.gov).

**Contact FoodShare Outreach Specialist Michelle Dudar-Sehr at 715-629-5405 for screening and application assistance.**

To update information in this community food resource directory, call 715-531-1930.  
Email [Katie.Bartko@wisc.edu](mailto:Katie.Bartko@wisc.edu) or [laura.hinz@wisc.edu](mailto:laura.hinz@wisc.edu).

Visit [stcroix-extension.wisc.edu/local-food-resources/](http://stcroix-extension.wisc.edu/local-food-resources/)

FoodWise education is funded by the USDA Supplemental Nutrition Assistance Program - SNAP and Expanded Food and Nutrition Education Program - EFNEP. [Please read the USDA Nondiscrimination Statement.](#)

An EEO/AA employer, University of Wisconsin-Madison Division of Extension provides equal opportunities in employment and programming, including Title VI, Title IX, the Americans with Disabilities Act (ADA) and Section 504 of the Rehabilitation Act.







***Glenwood City Area Community Club***

**2ND ANNUAL KICKOFF TO SUMMER**

**Thursday, May 30th  
4PM-7PM**

**Glenwood City Elementary Playground Area:  
850 Maple Street Glenwood City, WI 54013**

**Come celebrate the start of summer as a community.**

**This is a FREE event and open to all!**

Hotdogs, chips, cookies, and water will be provided (as supplies last).  
Activities include bounce house, minnow race, face painting, temporary  
tattoos, and more!

**Music by DJ Russell Wright from 4-7PM**